



The NX Boltlock is a key operated mechanical bolt interlock that is suitable for the control of electrical switches, circuit breakers or main power disconnector switches. The bolt controls mechanically the rotation or movement of operating handles or axis of breakers or main power switches.

The lock is manufactured in stainless steel making it ideal for use in heavy industries or corrosive environments.



Trapped Key Interlocks



INDUSTRY



ENERGY



Railway

## USAGE

Bolt interlock is used as a part of a safety system.



This lock is not designed for doors locks as the bolt can be released door open.

No hazardous substances were used in the manufacture of this product. The product can be disposed of in standard waste.

## INSTALLATION



A safety lock must be fitted with suitable fasteners.

Important:

To prevent unauthorized removal, the lock must be mounted using rivets or M5 stainless steel safety fixing screws (washers, nuts and screws).

The installation must be carried out by a competent and qualified person who has read and understood these instructions.

In case of vibrations, contact STI.

## MAINTENANCE

Periodic visual checks should be carried out to check for deformation or corrosion/erosion/acid aggregating by the site manager/safety officer. Clearing the marking/closing of the lock attachment.

Do not lubricate lock barrel with oil or grease, use Powder Graphite if necessary.



In case of defects being detected please contact your nearest Serv Trayvou Support Department for further actions. Please see Contact section for contact details.

## TECHNICAL DATA

Temperature rating	Contact STI for details
Weight	0,43 kg
Material	- Stainless steel 304 - Flip cap gasket: Cellular silicon - Marking plate: Aluminium (glued) Brass (riveted or glued) - Plate glue: Acrylic - Loctite AA330
Product finish	- Cover plate: Red (RAL 3000) polyester paint
Homologation	Contact STI for details
Salt spray resistance	Contact STI for details
IP Rating	NC2: IP66
Mechanical life	Contact STI for details
B10d	Contact STI for details
Diagnostic coverage (%)	Contact STI for details
Retention force	Contact STI for details
Shock & vibration (IK)	Contact STI for details
ROHS	Certificate available on request
REACH	Certificate available on request
Conflict mineral	Certificate available on request

## OPTIONS

- up to 5 key entries
- Consignment key (pocket key)
- Switch 2O-1C (standard) - Switch position when the key is free
- Without flip cap
- Not painted
- Multi-clasp for padlock
- High Temperature (not painted, without switch and flip cap)

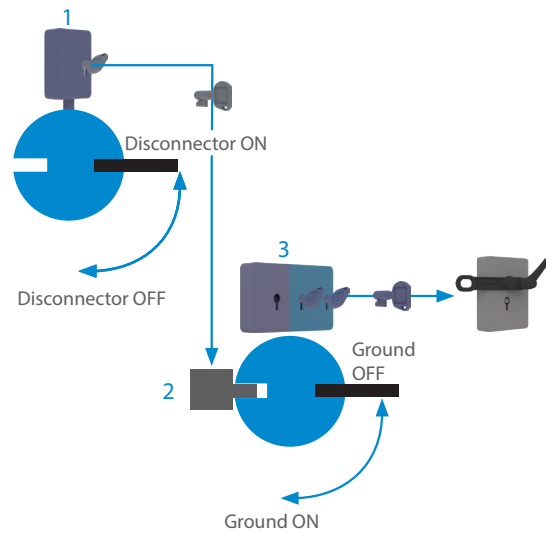
## APPLICATION

While power supply to the system is switched on, the access doors to the hazardous area are locked closed.

Key A is trapped in NX bolt interlock fitted to the disconnecter (1) while the process is on.

To enter the hazardous area:

- Turn off the disconnecter
- Release key A, the disconnecter is locked in the OFF position thanks to the mechanical bolt.
- Insert key A into the NX bolt fitted on the Earthing switch. Turn key A to withdraw bolt and ground OFF the switch. (2)
- Key A is trapped
- Release key B (3) The bolt will extend to lock the Earthing switch in the OFF position, ensuring that no one can switch on.
- Insert and turn the key B to operate the access interlock on the door
- Release and keep key C (safety key) to open the door.

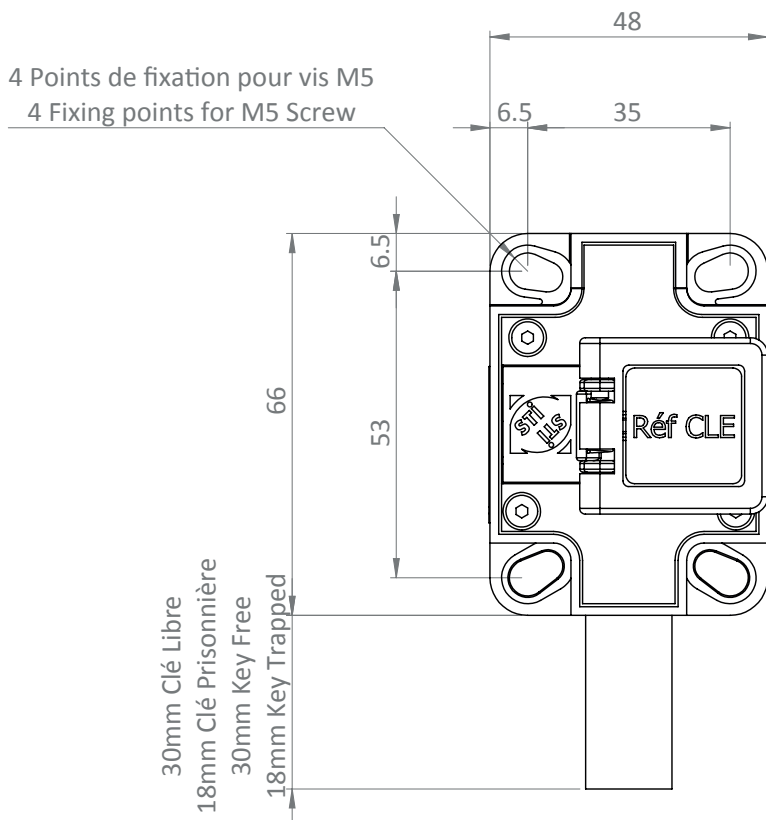
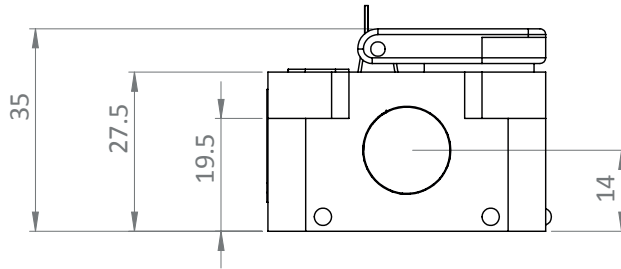


## DRAWING

Dimensions: in mm

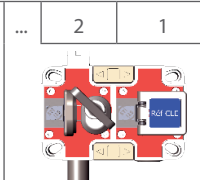
Note: For safe mounting, use security captive

### NX Boltlock



## ORDER INFORMATION

	Component type	No. of entries	No. of bolt	1	2	3	4	5
Part number	NX							
Example	NX	2	1	P15	AC	NS	0	000

1	Locking element	P15 = Bolt lock Ø15 P10 = Bolt lock Ø10 P08 = Bolt lock Ø08						
2	Lock Function	The function determines the number of keys and their condition (present or absent). Please see table FUNCTION						
3	Switch option	NS = No contact FS = Contact in front (no bolt) BS = Contact at back						
4	Switch position	1 & 2 (up to 5) is the switch position, reading from the right to the left						
5	Special work order	For dedicated applications. This number is assigned by STI for a suitable product. 0000 applies for standard items.						

## CONTACT INFORMATION

### Serv Trayvou

1 ter rue du Marais  
93100 MONTREUIL  
France

t : +33 (0)1 48 18 15 15

f : +33 (0)1 48 59 68 50

e : [sales@servtrayvou.com](mailto:sales@servtrayvou.com)