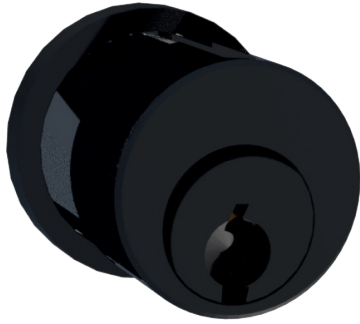


Camlock ABA/HBA



The camlocks are used for the mechanical locking of switches, circuit breakers, inverters, isolation switches and earth switches.

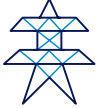
A cam is usually fixed on the driver at the back of the lock. Cams are generally used to lock a device by concealing the entry of the switch's handle. They are usually supplied by the equipment manufacturer. Because the internal locking system is designed by the OEM and varies from one to the other.

In order to reduce the camlock's length, rings can be added on the lock's threaded part.

The lock is manufactured in aluminium making it ideal for application in the energy sector.




Trapped Key Interlocks



ENERGY

USAGE

Camlock interlock is used as a part of a safety system.

 This lock is not designed for security purposes, such as a safe or external access to a building or for access gates or doors.

No hazardous substances were used in the manufacture of this product. The product can be disposed of in standard waste.

INSTALLATION

 A safety lock must be mounted with appropriate fasteners.

Important:

To avoid unauthorized removal, the lock must be mounted with stainless steel rivet or stainless steel safety screws and secured with a threadlock.

Plate drilling: $\varnothing 22,5$ + flat spot 19.5

Use the supplied nuts and tighten with the following torque:

- M22x0,8: 10Nm max
- M17x1: 2,5 Nm max

The interlock must be installed by a competent and qualified person who has read and understood these instructions.

MAINTENANCE

Contact STI for maintenance instructions.

TECHNICAL DATA

Temperature rating	-20°C / +100°C
Type of mounting	Surface mount using with suitable fasteners
Weight	71 gr
Material	- Metal, star key: Black anodised - Nickel brass - Zamak - Composite, star key: Black anodised - GRIVORY (65% FV) - Nickel brass - Zamak - Metal, flat key: Black anodised - Stainless steel 304 - Nickel brass - Zamak - Composite, flat key : Black anodised - Stainless steel 304 - GRIVORY (65% FV) - Nickel brass - Zamak
Product finish	Black anodised
Homologation	- Vibration tests IEC 60068-2-6 - Low-voltage directive 2006-95-CE
Salt spray resistance	240h BS
IP Rating (IP 55)	Contact STI for details
Mechanical life	Contact STI for details
B10d	Contact STI for details
Diagnostic coverage (%)	Contact STI for details
Retention force	Contact STI for details
Shock & vibration (IK)	Transport and functional random vibration
ROHS	Certificate available on request
REACH	Certificate available on request
Conflict mineral	Certificate available on request

OPTIONS

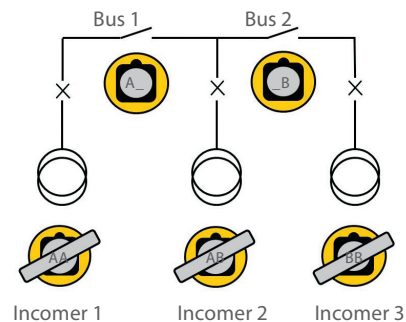
- Flat or Star key
- Changeover switch 1C (standard), sealing possible - Switch function in key free position
- Rotation (90° or 180°)
- Left or right (easily reversible once delivered).
- Type of rotor (aluminium or composite)

APPLICATION

This system requires five locks and three keys. In the normal operation the keys are trapped in the incomers in the closed position and both bus couplers are open.

The symbol sequence will allow appropriate incomers to be open allowing the key to be released, (using a key exchange box) and inserted and trapped to the associated bus coupler allowing it to be closed.

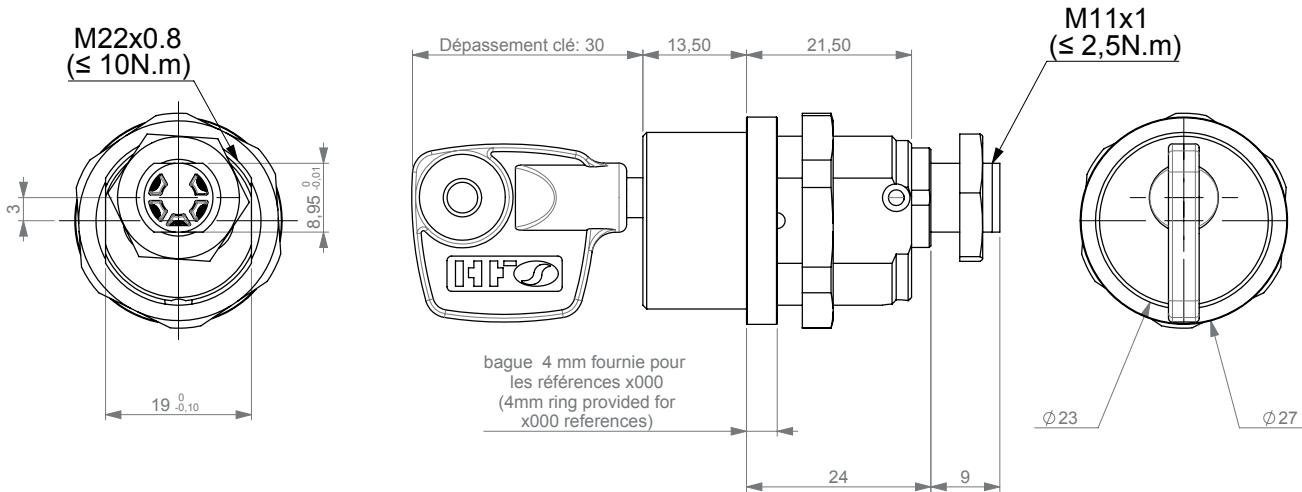
The symbols used here are AA, AB and BB for the Incomers and A_ (A BLANK) and _B (BLANK B) for the bus couplers.



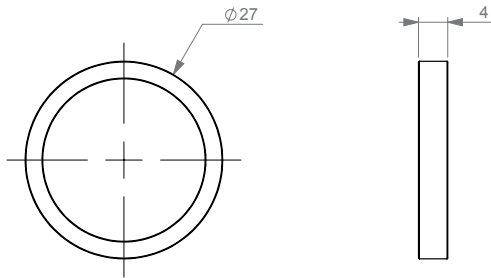
Note: For safe mounting, use security screws

Camlock ABA/HBA

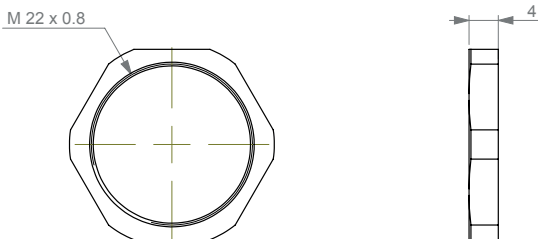
REP 1: Batteuse (Camlock)



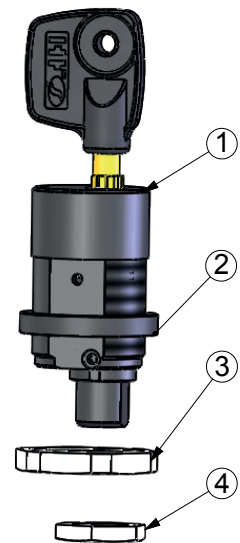
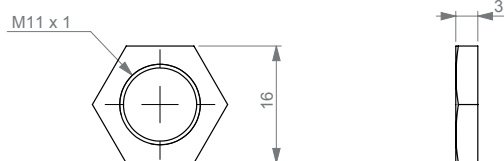
REP 2: Bague 4 MM (Ring 4 MM)



REP 3: Ecrou M 22 (Nut M 22)



REP 4: Ecrou M 11 (Nut M 11)



Référence Produit: (product reference:)

- 1/4 de tour droite = HBA90DPSx000 (1/4 right rotation)
- 1/4 de tour gauche = HBA90GPSx000 (1/4 left rotation)
- 1/2 tour droite = HBADPSx000 (1/2 right rotation)
- 1/2 de tour gauche = HBAGPSx000 (1/2 left rotation)

5 = Rotor Aluminium
6 = RotorComposite

Produit livré avec les écrous correspondants + bague 4mm
(Product supplied with the corresponding nuts + 4 mm ring)

ORDER INFORMATION

	1	2	3	4	5	6	7
Part number							
Example	A	BA	90	G	PS	5	000

1	Cylinder profile	A = Flat key H = Star key
2	Product family	BA = Camlock BC = Camlock with switch
3	Rotation	90° 180°
4	Rotation direction	G = Left D = Right
5	Key profile	Star key = PS Flat key 5 pins = EK, EL, EM, EP, ET, EV Flat key 6 pins = GK, GL, GM, GP, GT, GV
6	Type of rotor	5 = Aluminium
7	Particularity	000 = Standard 333 = Schneider type (M17x1) 283 = Siemens type (dwg on request) 149 = Legrand type (dwg on request) 331 = Pommier type (dwg on request)

ACCESSORIES

- Coloured identifier ring
- Spacer ring 4mm
- Spacer ring 6mm
- Nut M22
- Nut M11
- Nut M17
- Flip cap

CONTACT INFORMATION

Serv Trayvou

1 ter rue du Marais
93100 MONTREUIL
France

t : +33 (0)1 48 18 15 15

f : +33 (0)1 48 59 68 50

e : sales@servtrayvou.com